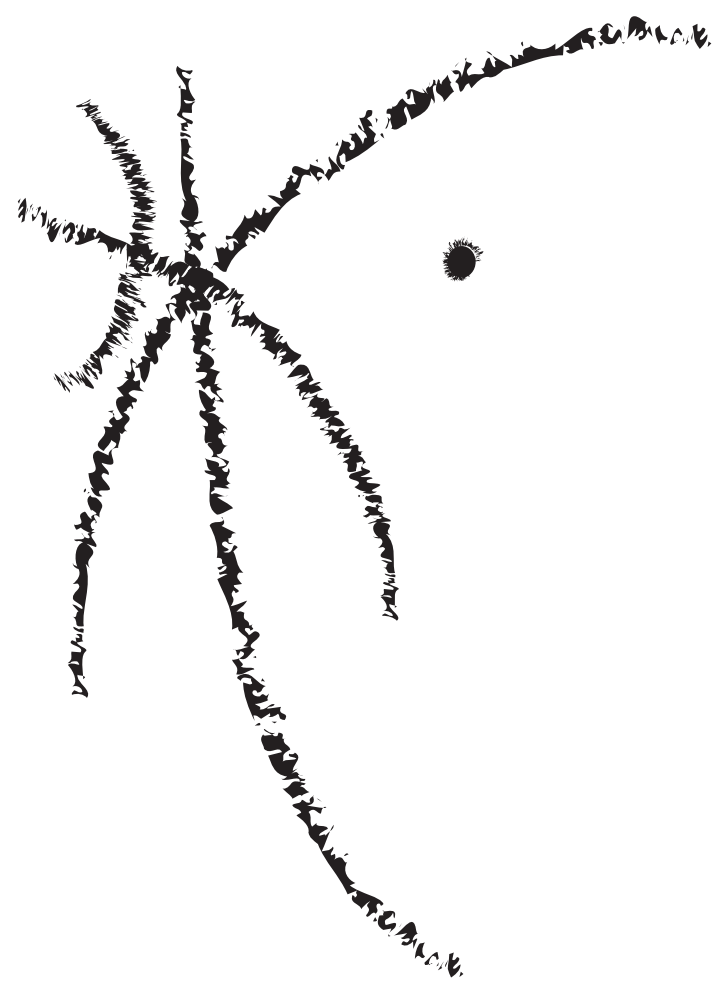


torcal



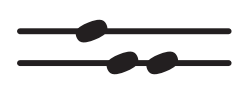
Performance notes

General note

This piece must be played in a mechanic organ with at least four keyboards: a pedal-board, and three manual keyboards.

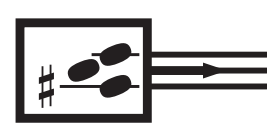
Rhythm

Rhythmic notation is proportional. Durations are equivalent to their displaying along the staff through a bold thick line. In order to keep proportionality, a "one-second" grid is provided; this grid however, can be treated with extreme flexibility so that the detail of the work can be noticeable.

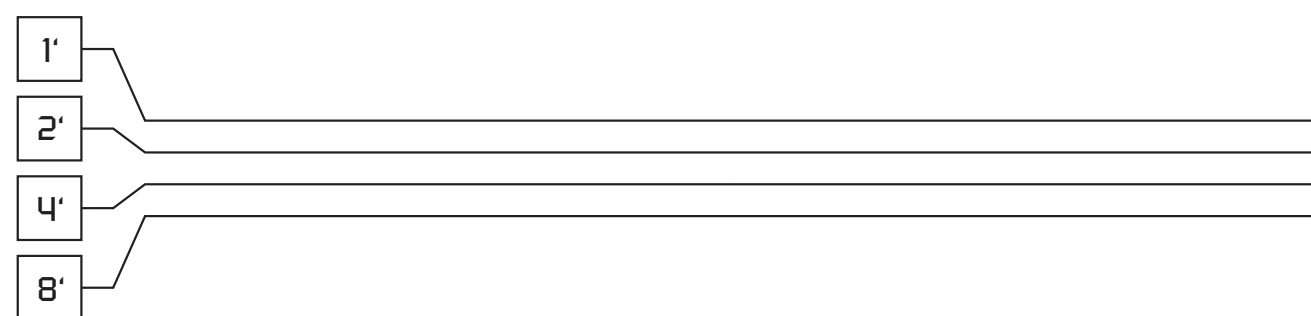
 Note-heads hanging on the bold thick line are to be played as very fast attack-sustained sounds.

 Note-heads without stems are to be played as short sounds (*quasi-tenuto*).

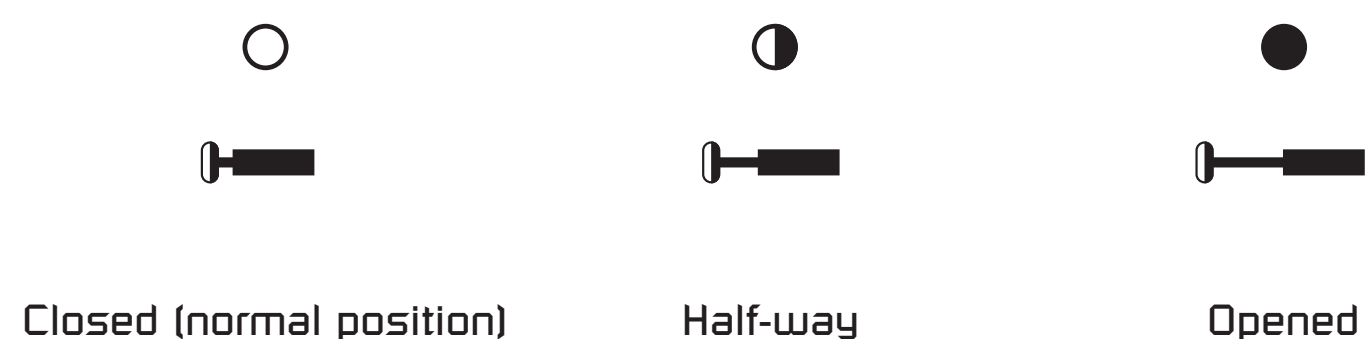
 Play the given pitches at the same time

 Play fast and randomly according to the given range. Keep an attack-sustain articulation.

Stop notation



A four (or two) line-staff above the five-line-staff stands for the foot size of the stop (e.g. 8' = eight-foot stop). There are three different positions of the tab or knob of each stop:



These different positions should be adjusted as to produce inharmonic pitch relations to yield acoustic effects such as beating, differential tones and amplitude-modulated patterns.

----- Gradual transition between two stop positions

———— Steady stop position

→ Keep the stop position until otherwise indicated

Manuals II and III use labial or flue pipes so that to produce a homogeneous registration (preferably use Flute, Gedackt or Principal stops). Manual I uses flue pipes as well, however, mutation-stops (MT) can alternatively use lingual or reed pipes. Mutation-stops must give preference to the following hierarchical order and adjust accordingly to the available stops:

Most preferred Least preferred

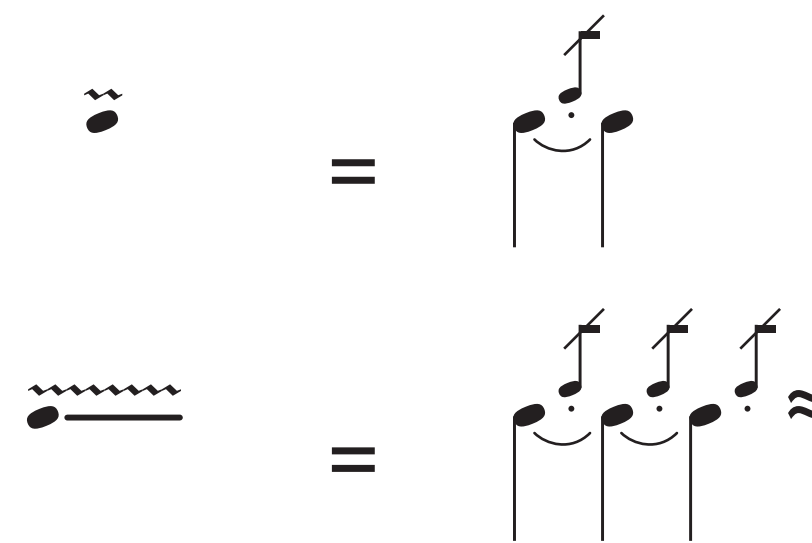
$2^{2/3}$, $1^{1/3}$, $5^{1/3}$, $1^{2/7}$, $1^{1/7}$, $1^{7/9}$, $1^{1/5}$, $3^{1/5}$, $1^{3/5}$

(Top mutation-stop must be a higher rank than the second one)


Preferred registration of the pedal-board is 32' for both stop-lines, however, use the lowest rank available. Top stop-line uses a flue rank while low line uses a reed rank.

Ornamentation

Mordents and trills are to be executed as it follows:



(Play a semitone above the indicated pitch. To be executed as fast as possible)

 *Double-Mordent* and *Double-trill*. Play at the same time a semitone and a whole tone above the indicated pitch. To be executed as fast as possible.

Miscellaneous



Block the indicated key

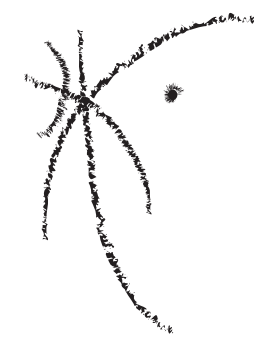
Release the indicated key

 *Stop-tremolo*. Continuous iteration between two stop positions. To be executed as fast as possible.

 Long fermata

Duration

~ 18 minutes.



0 10 20 30 40 50

1'
2'
4'
8'

Man. III

1'
2'
4'
8'

Man. II

MT
MT
8'
8'

Man. I

32'
32'

Ped.

2 0 10 20 30 40 50

1'
2'
4'
8'

Man. II

3 0 10 20 30 40 50

1'
2'
4'
8'

Man. II

4 0 10 20 30 40 50

1'
2'
4'
8'

Man. II

5

0 10 20 30 40 50

1'
2'
4'
8'

Man. II

32'
32'

Ped.

6

0 10 20 30 40 50

1'
2'
4'
8'

Man. II

32'
32'

Ped.

7

0 10 20 30 40 50

1'
2'
4'
8'

Man. III

8

0 10 20 30 40 50

1'
2'
4'
8'

Man. III

MT
MT
8'
8'

Man. I

9

0 10 20 30 40 50

1'
2'
4'
8'

Man. III

MT
MT
8'
8'

Man. I

Ped.

10

0 10 20 30 40 50

1'
2'
4'
8'

Man. III

MT
MT
8'
8'

Man. I

Ped.

11

0 10 20 30 40 50

1'
2'
4'
8'

Man. III

1'
2'
4'
8'

Man. II

MT
MT
8'
8'

Man. I

32'
32'

Ped.