

spectrum

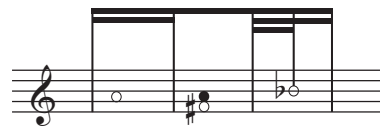


Performance notes

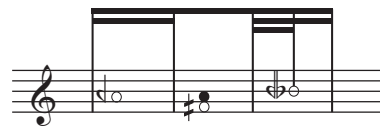
This piece must be played in a double-keyboard harpsichord. White noteheads are played on the upper keyboard (8''). Black noteheads are played on the lower keyboard (8' and 4'). Black-and-white noteheads are played on both keyboards.

Tuning

Keyboards are tuned in equal temperament, however the upper one (see range below) must be tuned one quarter-tone flat:



written



sounds

Alterations

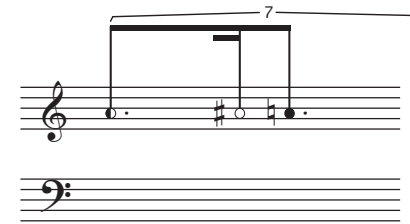
They have effect only the note that they immediately precede.

Tempo

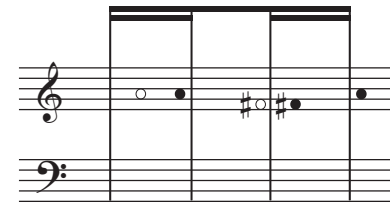
General tempo can be treated with flexibility in order to make noticeable the detail of the work but always attempting to fit to the suggested m.m value ($\downarrow = \sim 48$).

Rhythmic configuration

Both metric and proportional notation have been used consistently:



metric configuration



proportional configuration

Technical conditions

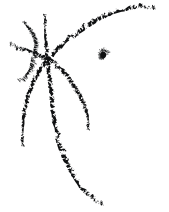
The harpsichord must be amplified with a maximum reverberation of 5.5 seconds decay controlled through an effects pedal:

fx ped. - _____ without reverb.
 + _____ maximum reverb.

General note

Wherever it is possible sounds must be prolonged until resonance decays. In order to get that prolongation sometimes it will be necessary trying different fingerings. Therefore noteheads indicate time attack and not real duration.

spectrum



♩ = ~48

fx ped. -

+

2

3

4

5

5

6

7

8

Musical notation for exercise 8, measures 1-8. The treble clef contains a sequence of eighth notes with various accidentals, including a five-measure slur. The bass clef contains a sequence of eighth notes with various accidentals.

9

Musical notation for exercise 9, measures 1-8. The treble clef contains a sequence of eighth notes with various accidentals, including two six-measure slurs. The bass clef contains a sequence of eighth notes with various accidentals.

10

Musical notation for exercise 10, measures 1-8. The treble clef contains a sequence of eighth notes with various accidentals, including a three-measure slur and a five-measure slur. The bass clef contains a sequence of eighth notes with various accidentals.

11

Musical notation for exercise 11, measures 1-8. The treble clef contains a sequence of eighth notes with various accidentals, including a three-measure slur and a five-measure slur. The bass clef contains a sequence of eighth notes with various accidentals.