

nimboscirrus

for solo flute

mauricio rodríguez

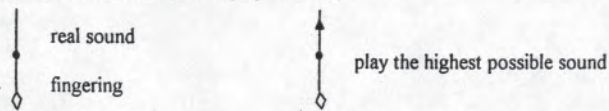
Performance notes

Technical conditions

The flute must be amplified through the mouth-piece hole with one reverberation of 1.5 seconds decay.

General indication

All notes are produced as whisper tones (high partials):



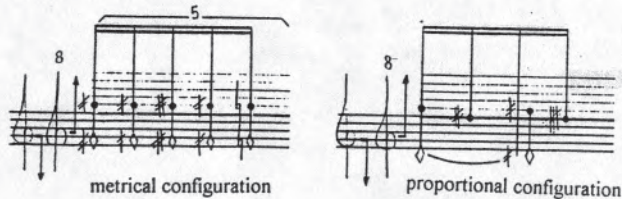
Residual sounds or another noise-like resonances, key sounds and sound breathing should be avoided if possible.

Tempo

The general tempo can be treated with flexibility in order to make noticeable the detail of the work, but always attempting to fit to the suggested tempo (♩ = 40).

Rhythmical configuration

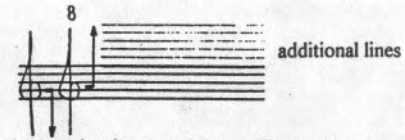
This score is written proportionally; for sections without traditional rhythmical notation, the proportional notation has been used consistently. Durations are prolonged until a new notehead appears (play *sempre legato*).



Breathing

It happens strictly in rests.

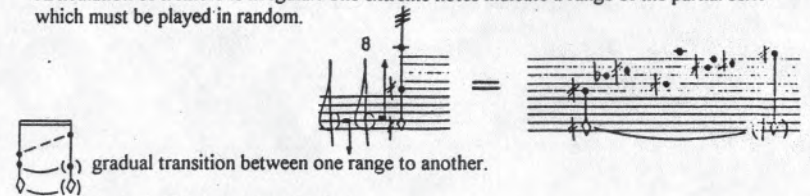
Clef



Notes written under the second-line staff are read in treble-clef.
Notes written above the second-space staff are read one octave higher.

Tremolo

Articulation of tremolo is irregular. The extreme notes indicate a range of the partial serie which must be played in random.



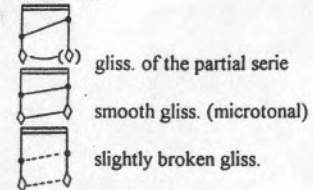
There are three different velocities for it:

- slow trem. it runs between 3 and 8 articulations per second
- mid. trem. it runs between 8 and 14 articulations per second
- fast trem. as fast as possible.

Trill

It must be played as fast as possible.

Glissando



Duration

approx. 3'

♩ = 40

Handwritten musical score for the first system. It consists of a single staff with a treble clef and a key signature of one sharp (F#). The tempo is marked as ♩ = 40. The system contains several measures with complex rhythmic patterns, including sixteenth and thirty-second notes. Above the staff, there are several diagrams of a piano keyboard with dots indicating fingerings for specific notes. The notes are often beamed together in groups of six, seven, or three. Dynamic markings include *p*, *pp*, *pppp*, *p*, *ppp*, and *>pppp*. There are also trills marked with "tr." and wavy lines above them. The system ends with a fermata over a note.

Handwritten musical score for the second system. It continues the single staff with a treble clef and one sharp key signature. The system features similar complex rhythmic patterns with beamed notes and dynamic markings such as *pp*, *ppp*, *pppp*, *ppp*, *>pppp*, *ppp*, and *pp*. Trills and wavy lines are present above some notes. The system concludes with a fermata.

Handwritten musical score for the third system. The single staff continues with complex rhythmic patterns and dynamic markings including *p*, *ppp*, *pp*, *ppp*, and *pp*. The system includes several measures with beamed notes and dynamic markings. A trill is marked with "tr." and a wavy line. The system ends with a fermata.

Handwritten musical score for the fourth system. The single staff continues with complex rhythmic patterns and dynamic markings such as *p*, *pp*, *p*, *ppp*, and *pppp*. The system features beamed notes and dynamic markings. It concludes with a fermata.

