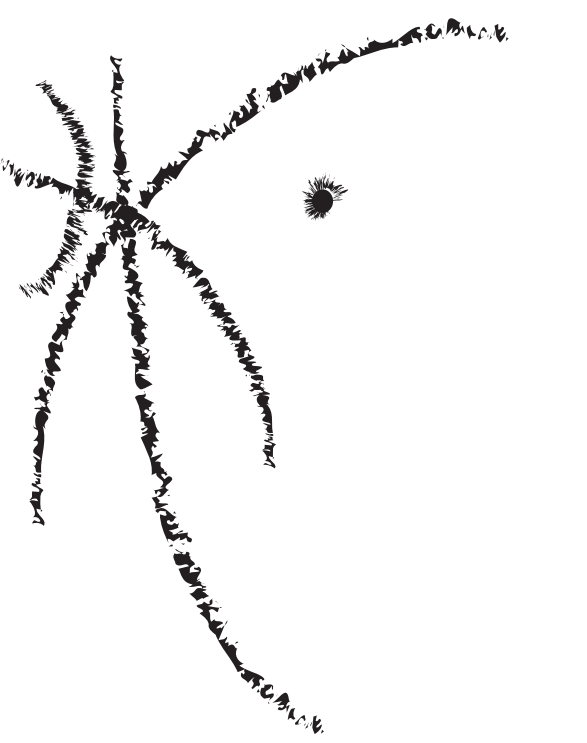


// fluere //

[for string trio and piano]



Performance notes

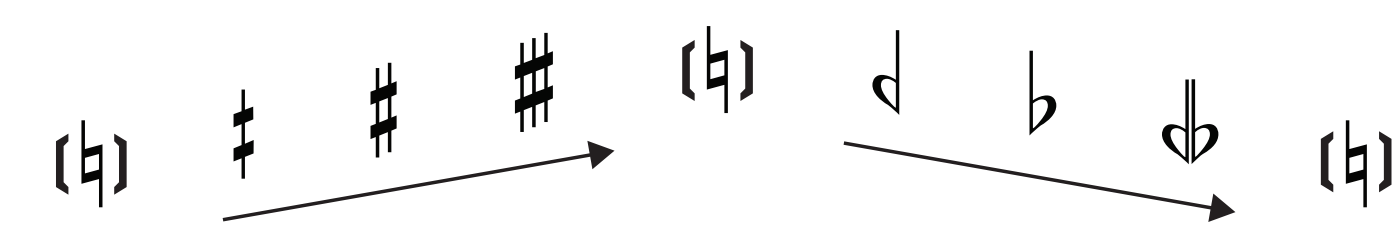
Ensemble

- Violin
- Viola
- Cello
- Piano (with e-bow)

General note

Tempo-marks are to be treated with flexibility in order to make it noticeable the detail of the work

Tuning and accidentals



Accidentals at same octave are retained for entire measure unless explicitly annulled

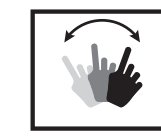
Strings

Sound quality and articulation

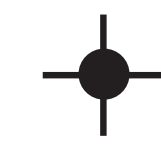
- Normal sound quality
- Natural harmonics
- Artificial harmonics
- Half-harmonics Middle-pressure fingering on the string
- Over-press the bow until producing a rough sound with extreme distortion but recognizable pitch
- Normal bow-pressure



Gottato



Rub the wooden-frame or soundboard with the fingertip



Damp any resonance

Vibrato

Vibrato is irregular. The velocity of vibrato can vary according to the drawing:



Slow (between 4 and 8 modulations per second)



Medium (between 8 and 12 modulations per second)



Fast (between 12 and 16 modulations per second)

Piano

Sound quality and articulation



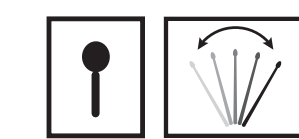
Slightly damp the piano string with the fingertip while playing the given key



Damp the piano string with the hand-palm to get a totally muffled and percussive sound



Scrape the piano string with the nail and fingertip in a long-side manner in order to get a rough and distorted sound



Use a hard mallet to rub on the wooden frame



Move the mallet up or down on the given surface to get a *glissando* effect.



Use a metal slider on the indicated range and move it along the string to produce pitch bending

Pedaling



Gradual pedal action



Gradual pedal release

Duration

~ 4' 15"

Vln. ~ 44 m.m. ~ 36 m.m. ~ 44 m.m.

Via. ~ 44 m.m. ~ 36 m.m. ~ 44 m.m.

Vcl. ~ 44 m.m. ~ 36 m.m. ~ 44 m.m.

Pno. ~ 44 m.m. ~ 36 m.m. ~ 44 m.m.

Cello ~ 44 m.m. ~ 36 m.m. ~ 44 m.m.

Bassoon ~ 44 m.m. ~ 36 m.m. ~ 44 m.m.

Tuba ~ 44 m.m. ~ 36 m.m. ~ 44 m.m.

Trombones ~ 44 m.m. ~ 36 m.m. ~ 44 m.m.

Trumpets ~ 44 m.m. ~ 36 m.m. ~ 44 m.m.

Percussion ~ 44 m.m. ~ 36 m.m. ~ 44 m.m.

Wood frame ~ 44 m.m. ~ 36 m.m. ~ 44 m.m.

Slider ~ 44 m.m. ~ 36 m.m. ~ 44 m.m.

Una corda ~ 44 m.m. ~ 36 m.m. ~ 44 m.m.

Sul ponticello ~ 44 m.m. ~ 36 m.m. ~ 44 m.m.

Senza vibrato ~ 44 m.m. ~ 36 m.m. ~ 44 m.m.

Molto sul ponticello ~ 44 m.m. ~ 36 m.m. ~ 44 m.m.

Hair + legno ~ 44 m.m. ~ 36 m.m. ~ 44 m.m.

Slider ~ 44 m.m. ~ 36 m.m. ~ 44 m.m.

Una corda ~ 44 m.m. ~ 36 m.m. ~ 44 m.m.

lo ~ 44 m.m. ~ 36 m.m. ~ 44 m.m.

Vln. ~ 76a m.m. ~ 52 m.m. ~ 44 m.m.

Via. ~ 76a m.m. ~ 52 m.m. ~ 44 m.m.

Vcl. ~ 76a m.m. ~ 52 m.m. ~ 44 m.m.

Pno. ~ 76a m.m. ~ 52 m.m. ~ 44 m.m.

Cello ~ 76a m.m. ~ 52 m.m. ~ 44 m.m.

Bassoon ~ 76a m.m. ~ 52 m.m. ~ 44 m.m.

Tuba ~ 76a m.m. ~ 52 m.m. ~ 44 m.m.

Trombones ~ 76a m.m. ~ 52 m.m. ~ 44 m.m.

Trumpets ~ 76a m.m. ~ 52 m.m. ~ 44 m.m.

Percussion ~ 76a m.m. ~ 52 m.m. ~ 44 m.m.

Wood frame ~ 76a m.m. ~ 52 m.m. ~ 44 m.m.

Slider ~ 76a m.m. ~ 52 m.m. ~ 44 m.m.

Una corda ~ 76a m.m. ~ 52 m.m. ~ 44 m.m.

Sul ponticello ~ 76a m.m. ~ 52 m.m. ~ 44 m.m.

Senza vibrato ~ 76a m.m. ~ 52 m.m. ~ 44 m.m.

Molto sul ponticello ~ 76a m.m. ~ 52 m.m. ~ 44 m.m.

Hair + legno ~ 76a m.m. ~ 52 m.m. ~ 44 m.m.

Slider ~ 76a m.m. ~ 52 m.m. ~ 44 m.m.

Una corda ~ 76a m.m. ~ 52 m.m. ~ 44 m.m.

lo ~ 76a m.m. ~ 52 m.m. ~ 44 m.m.

13

Vln.

Vla.

Vcl.

Pno.

Wood frame

Normal Hair

Normal Hair

Normal Hair

~ 52 m.m.

pp / fff

ff < fff

ff

fff / ff

fff

ff / fff

ff

fff

ff / pp

pp

f / p

pp

f / p

pp

f / p

pp / fff

ff / fff

ff

fff > ff / fff

ff

fff

ff

fff

ff / pp

pp

f / p

pp

f / p

pp / fff

ff / fff

ff

fff / ff

fff

ff < fff

ff

fff

ff / pp

ppp

f

fff

ff

f

fff

pp

19

Vln.

Vla.

Vcl.

Pno.

Slider

laco

~ 44 m.m.

~ 36 m.m.

~ 44 m.m.

~ 52 m.m.

Moito sul ponticello

Hair + legna

Moito sul ponticello

Hair + legna

Moito sul ponticello

Hair + legna

ppp

ppp

ppp

ppp

ppp

ppp

pp

p

pp / p

f

pp / p

pp / p

f / p

p

f

ff

fff

ppp

ppp

ppp